



INTERSTATE-McBEE



HEUI Fuel Injection Replacement Parts for 7.3L Powerstroke and Navistar T444E/DT466E/I530E



INTERSTATE-McBEE, LLC

4901 Lakeside Avenue • Cleveland, Ohio 44114-3996 U.S.A.

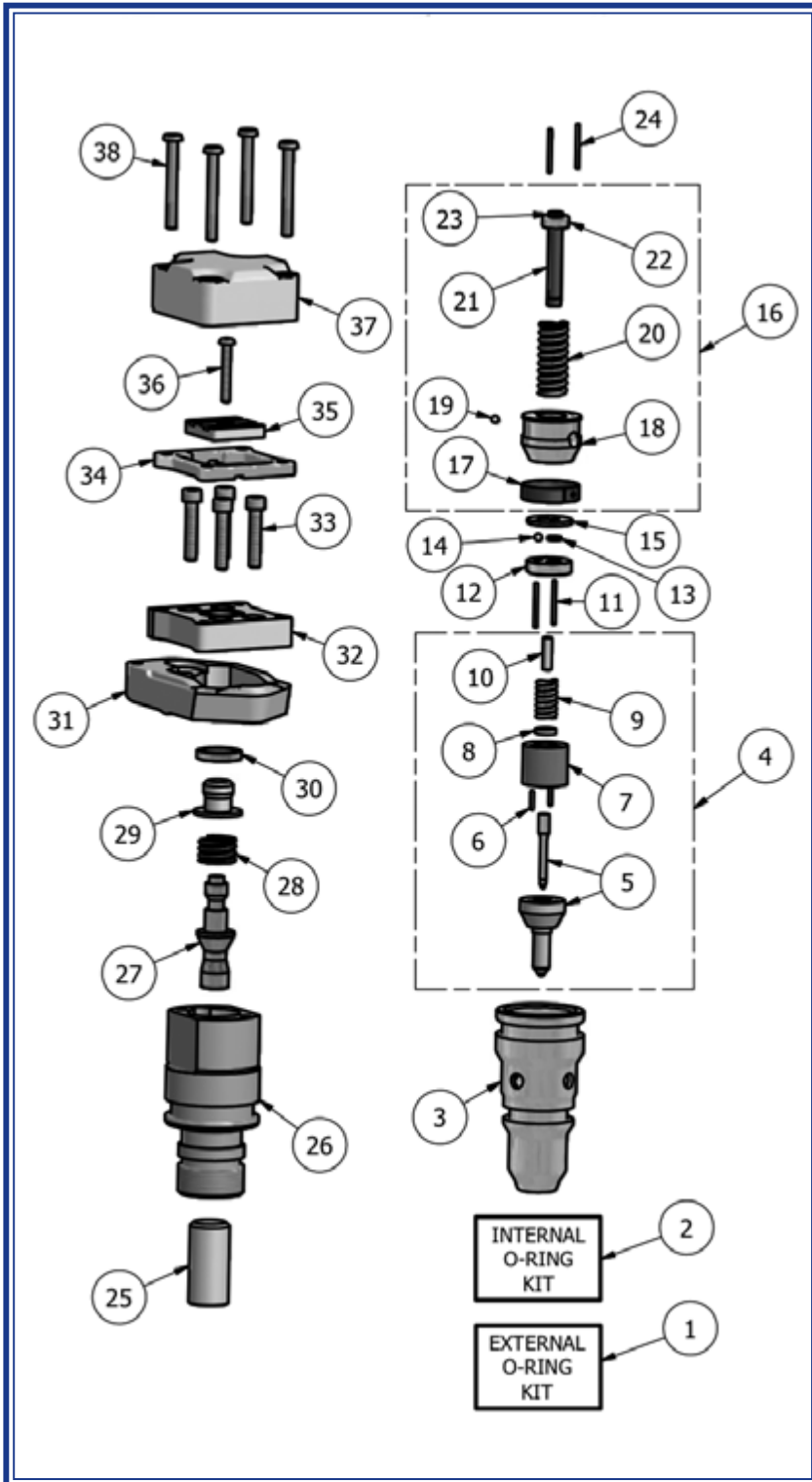
216-881-0015 • Toll Free: 1-800-321-4234 • Fax: 216-706-5010

www.interstate-mcbee.com • E-mail: sales@interstate-mcbee.com

All original manufacturer's names, numbers, symbols and descriptions are used for reference purposes only and do not imply that any part listed is the product of this manufacturer.

© 2008 International/Navistar is a Registered Trademark of the International Truck and Engine Corporation.

HEUI Injectors



ITEM	PART NUMBER	DESCRIPTION	QTY REQ'D.
1	MCBS0008	External O-ring Kit	1
2	See Application Chart on Next Page	Internal O-ring kit	1
3	8991079	Nut	1
4	See Application Chart on Next Page	Nozzle Group	1
5	See Application Chart on Next Page	Nozzle Assembly	1
6	8991002	Dowel Pin	2
7	8991029	Spacer Sleeve	1
8	8991028	Lift Spacer	1
9	8991027	Nozzle Spring	1
9	8991106	Nozzle Spring	1
10	8991026	Stop Pin	1
11	8991001	Dowel Pin	2
12	8991080	Stop	1
13	8991081	Check Plate	1
14	8991082	Check Ball	1
15	8991083	Stop Plate	1
16	See Application Chart on Next Page	Plunger and Barrel Group	1
17	REF	Retaining Spring	1
18	REF	Barrel	1
19	REF	Check Ball	1
20	REF	Spring	1
21	REF	Plunger	1
22	REF	Retaining Washer	1
23	REF	Retaining Ring	1
24	8991001	Dowel	2
25	See Application Chart on Next Page	Intensifier Piston	1
26	8991091	Piston & Valve Body	1
27	8991092	Poppet Valve	1
28	8991093	Poppet Spring	1
29	8991094	Sleeve	1
30	8991095	Poppet Shim	1
31	8991096	Clamp	1
32	8991097	Adapter	1
33	8991099	Assembly Screw	4
34	8991100	Solenoid Spacer	1
35	8991101	Armature	1
36	8991102	Adjusting Screw	1
37	8991103	Solenoid	1
38	8991003	Solenoid Screw	4

Miscellaneous HEUI Items



INTERSTATE-McBEE



PART NUMBER	DESCRIPTION
M-1830742C92	Seal Kit, External, Injector, Navistar DT466E, T444E,I530E
MCB0006	Kit, Chamber Gasket (Pkg of 6)
M-2421539	O-Ring Kit, Single Fuel Injector, 3126
MCB06063/31	P&B Group, 3126, 3126B
MCB07161/31	P&B Group, 3126, 3126B
MCB41006/32	Nozzle Group, 3126, 3126B
MCB41016/31	Nozzle Group, 3126, 3126B
MCB41016/32	Nozzle Group, 3126, 3126B
M-4C37-9C977-AA	Repair Kit, IPR
M-1817687C92	Water Pump, DT466E (New Generation)
M-3286277	Water Pump, 5.9L, 4-6B
M-3286278	Water Pump, 5.9L, 4-6B
M-3935878	Valve Cover Gasket, ISB5.9
M-3936316	Fuel Transfer Pump, B, 6C

Additional Cross Reference

PART DESCRIPTION	REFERENCE NUMBER	INTERSTATE-McBEE REFERENCE NUMBER	PART DESCRIPTION	REFERENCE NUMBER	INTERSTATE-McBEE REFERENCE NUMBER	PART DESCRIPTION	REFERENCE NUMBER	INTERSTATE-McBEE REFERENCE NUMBER
Nozzle Group	DPE41007/31	8991137	P&B Group	DPE06000/31	8996000	Intensifier Piston	DPS13051/31	8991117
Nozzle Group	DPE41007/31	8991137	P&B Group	DPE06060/31	8996060	Intensifier Piston	DPS13050/31	8991114
Nozzle Group	DPE41007/31	8991137	P&B Group	DPE06001/31	8996001	Intensifier Piston	DPS13052/31	8991115
Nozzle Group	DPE41007/31	8991137	P&B Group	DPE06061/31	8996061	Intensifier Piston	DPS13056/31	8991111
Nozzle Group	DPE41007/31	8991137	P&B Group	DPE06061/31	8996061	Intensifier Piston	DPS13053/31	8991110
Nozzle Group	DPE41025/31	8991155	P&B Group	DPE06001/31	8996001	Intensifier Piston	DPS13052/31	8991115
Nozzle Group	DPE41015/31	8991145	P&B Group	DPE06001/31	8996001	Intensifier Piston	DPS13052/31	8991115
Nozzle Group	DPE41005/31	8991135	P&B Group	DPE06001/31	8996001	Intensifier Piston	DPS13052/31	8991115
Nozzle Group	DPE41035/31	8991165	P&B Group	DPE07100/31	8997100	Intensifier Piston	DPS13055/31	8991113
Nozzle Group	DPE41005/31	8991135	P&B Group	DPE06060/31	8996060	Intensifier Piston	DPS13057/31	8991112
Nozzle Group	DPE41045/31	8991175	P&B Group	DPE07160/31	8997160	Intensifier Piston	DPS13054/31	8991118
Nozzle Group	DPE41006/31	8991136	P&B Group	DPE07160/31	8997160	Intensifier Piston	DPS13054/31	8991118
Nozzle Group	DPE41016/31	8991146	P&B Group	DPE07160/31	8997160	Intensifier Piston	DPS13054/31	8991118
Nozzle Group	DPE41006/31	8991136	P&B Group	DPE07160/31	8997160	Intensifier Piston	DPS13054/31	8991118
Nozzle Group	DPE41026/31	8991156	P&B Group	DPE07160/31	8997160	Intensifier Piston	DPS13054/31	8991118
Nozzle Group	DPE41036/31	8991166	P&B Group	DPE07160/31	8997160	Intensifier Piston	DPS13054/31	8991118



ITEM	PART NUMBER	DESCRIPTION	QTY REQ'D.
#2	MCBS0007	Internal O-Ring Kits	1
	MCBS0530	Internal O-Ring Kits	1
#4	8991135	Nozzle Group	1
	8991136	Nozzle Group	1
	8991137	Nozzle Group	1
	8991145	Nozzle Group	1
	8991146	Nozzle Group	1
	8991155	Nozzle Group	1
	8991156	Nozzle Group	1
	8991165	Nozzle Group	1
	8991166	Nozzle Group	1
	8991175	Nozzle Group	1
	#5	8991035	Nozzle Assembly
8991036		Nozzle Assembly	1
8991037		Nozzle Assembly	1
8991045		Nozzle Assembly	1
8991046		Nozzle Assembly	1
8991055		Nozzle Assembly	1

ITEM	PART NUMBER	DESCRIPTION	QTY REQ'D.
#5 (cont.)	8991056	Nozzle Assembly	1
	8991065	Nozzle Assembly	1
	8991066	Nozzle Assembly	1
	8991075	Nozzle Assembly	1
#16	8996000	Plunger and Barrel Group	1
	8996001	Plunger and Barrel Group	1
	8996060	Plunger and Barrel Group	1
	8996061	Plunger and Barrel Group	1
	8997100	Plunger and Barrel Group	1
	8997160	Plunger and Barrel Group	1
#25	8991110	Intensifier Piston	1
	8991111	Intensifier Piston	1
	8991112	Intensifier Piston	1
	8991113	Intensifier Piston	1
	8991114	Intensifier Piston	1
	8991115	Intensifier Piston	1
	8991117	Intensifier Piston	1
	8991118	Intensifier Piston	1

MODEL YEAR	ENGINE	NAVISTAR INJECTOR P/N	FORD INJECTOR P/N	P&B GROUP TYPE PLUNGER OD	NOZZLE P/N ORIFICES VOP (PSI)	NOZZLE GROUP	SEAL KITS: INTERNAL EXTERNAL	INTENSIFIER PISTON OD LENGTH
94-96 94-98	Ford F-Series (49 States) Ford F-Series (CA) Ford F-Series (All) Navistar T444E Up to Engine S/N 460194	1822800C95 (3) 1816187C3 (4) 1822801C98 (1) 1822801C99 (1) 1821836C3 (2)	F81Z9E527DRM F4TZ9VE527AARM F7TZ9E527ARM	8996000 Standard 6.0mm	8991037 7 holes 2675 +/-125	8991137	MCBS0007 MCBS0008	8991117 16mm 32.2mm
97-99 99	Ford F-Series (49 States) Vehicle Built Before 12/7/98 Ford F-Series (CA) Vehicle built before 12/7/98 Ford F-Series Navistar T444E Engine S/N 460195 to 843989	1824582C94 1822803C1 1824583C97 1825125C1	F81Z9E527BRM F7TZ9E527BRM	8996060 Prime 6.0 mm	8991037 7 holes 2675 +/-125	8991137	MCBS0007 MCBS0008	8991114 16mm 29.7mm
94-96	Navistar T444E (High Output), 210HP (High Torque) & 230HP	1824455C94 1822890C1 1824456C96 1824472C1		8996001 Standard 6.0mm	8991037 7 holes 2675 +/-125	8991137	MCBS0007 MCBS0008	8991115 16mm 29.7mm
99-02 99-03	Ford F-Series and E-Series Vehicle built after 12/7/98 Navistar T444E Engine S/N 843990 & Up	1831551C1 1831550C1 1831487C92 1831487C93 1831489C1	F81Z9E527CRM 5C3Z9E527BRM	8996061 Prime 6.0mm	8991037 7 holes 2675 +/-125	8991137	MCBS0007 MCBS0008	8991111 16mm 29.1mm
99-02 02-03	Ford F-Series S/N 661496 to 896812 Ford E-Series S/N 661974 to 896812 Navistar T444E Engine S/N 1313828 & Up	1833639C1 1833640C1 1833646C92	F81Z9E527EARM XC3Z9E527AARM F61Z9VE527ERM	8996061 Prime 6.0mm	8991037 7 holes 2675 +/-125	8991137	MCBS0007 MCBS0008	8991110 16mm 29.1mm

MODEL YEAR	ENGINES	NAVISTAR INJECTOR P/N	P&B GROUP TYPE PLUNGER OD	NOZZLE P/N ORIFICES VOP (PSI)	NOZZLE GROUP	SEAL KITS: INTERNAL EXTERNAL	INTENSIFIER PISTON OD LENGTH
95-97	Navistar DT466E, 230HP (High Torque) & 250HP up to S/N 1084867	1823736C94 1819834C1 1824928C94 1824917C2	8996001 Standard 6.0mm	8991055 5 holes 3700 +/-125	8991155	MCB0007 MCB0008	8991115 16mm 29.7mm
95-97	Navistar DT466E, 175 & 190HP up to S/N 1028710	1824742C91 1824739C1 1824929C94 1824918C2	8996001 Standard 6.0mm	8991045 5 holes 3700 +/-125	8991145	MCB0007 MCB0008	8991115 16mm 29.7mm
95-97	Navistar DT466E, 195, 210 & 230HP up to S/N 1028710	1824743C91 1824740C1 1 824930C94 1824919C2	8996001 Standard 6.0mm	8991035 5 holes 3700 +/-125	8991135	MCB0007 MCB0008	8991115 16mm 29.7mm
95-97	Navistar I530E, 250, 275 & 300HP up to S/N 1084028	1824744C94 1824741C2 1824931C94 1824920C2	8997100 Standard 7.1mm	8991065 5 holes 3700 +/-125	8991165	MCB0530 MCB0008	8991113 17.5mm 29.3mm
97-99	Navistar DT466E, 175 to 210 & 230HP Engine S/N 1028711 to 1194038	1829838C94 1829926C2 1829839C93 1829839C94 1829837C2	8996060 Prime 6.0mm	8991035 5 holes 3700 +/-125	8991135	MCB0007 MCB0008	8991112 16mm 29.1mm
98-99	Navistar I530E, 250 to 320HP Engine S/N 1084029 to 1134350 Perkins 1300 Series Edi, AGCO 9675, Detroit Diesel 8.7L Series 40E	1830145C92 1830147C2 1830146C92 1830146C93 1830148C2	8997160 Prime 7.1mm	8991075 5 holes 3700 +/-125	8991175	MCBS0530 MCBS0008	8991118 17.5mm 26.7mm
97-99	Navistar DT466E, 250HP S/N 1084868 to 1125227	1830155C91 1830157C1 1830156C91 1830573C2	8997160 Prime 7.1mm	8991036 6 holes 3700 +/-125	8991136	MCBS0530 MCBS0008	8991118 17.5mm 26.7mm
99-UP	Navistar DT466E, 250HP S/N 1125228 & Up, Perkins 1300 Series Edi	1830740C92 1830560C2 1830561C92 1830741C92 1830741C93 1830562C2	8997160 Prime 7.1mm	8991046 6 holes 3700 +/-125	8991146	MCBS0530 MCBS0008	8991118 17.5mm 26.7mm
99	Navistar I530E, 250 to 320HP, Engine S/N 1134351 to 1194038 Perkins 1300 Series Edi Detroit Diesel 8.7L Series 40E	1830570C92 1830571C2 1830572C92 1830572C93 1830573C2	8997160 Prime 7.1mm	8991036 6 holes 3700 +/-125	8991136	MCBS0530 MCBS0008	8991118 17.5mm 26.7mm
00-UP	Navistar I530E Engine 1194039 & Up Perkins 1300 Series Edi Detroit Diesel 8.7L Series 40E	1830693C1 1830694C91 1830692C91 1830691C1	8997160 Prime 7.1mm	8991056 6 holes 3700 +/-125	8991156	MCBS0530 MCBS0008	8991118 17.5mm 26.7mm
00-UP	Navistar DT466E Transit, Detroit Diesel 7.6L Series 40E	1836252C91 1836253C1 1836251C91 1836250C1	8997160 Prime 7.1mm	8991066 6 holes 3700 +/-125	8991166	MCBS0530 MCBS0008	8991118 17.5mm 26.7mm



INTERSTATE-McBEE



INTERSTATE-McBEE, LLC LIMITED GENERAL PRODUCTS WARRANTY *EXPORT & REMANUFACTURED ENGINE PARTS ALL FUEL INJECTION, NEW & REMANUFACTURED*

COVERAGE

The parts furnished by Interstate-McBee are warranted to be free from defects in material and workmanship under normal use and service for a period of twelve (12) months, 100,000 miles or 2,000 hours of operation, whichever comes first, from date of first installation in an engine. This warranty applies to all owners in the chain of distribution, i.e. distributor, dealer, original owner, until the end of the respective periods of coverage and shall not apply to subsequent owners.

This warranty does not apply to parts provided by Interstate Interstate-McBee on a no-charge basis. In no event shall this warranty extend beyond eighteen (18) months from date of sale or manufacture.

INTERSTATE-McBEE RESPONSIBILITIES

The obligation of Interstate-McBee under this warranty, statutory or otherwise, is limited to the replacement or repair of Interstate – McBee parts, which our inspection discloses to our satisfaction to have been defective. Repair will be performed at our factory in Cleveland, OH or other Interstate-McBee approved facility. Proof of purchase is required.

OWNER'S RESPONSIBILITIES

Owner is responsible for the operation and maintenance of the engine as specified in the APPLICABLE O.E.M. OPERATION AND MAINTENANCE MANUALS. Owner must give notice within (30) days of any suspected failure and before expiration of applicable warranty to be considered warrantable. Owner will provide alleged defective and associated parts for examination by Interstate-McBee and, if requested, return same F.O.B. Cleveland, Ohio. Interstate-McBee further reserves the right to examine any engine subject to a claim under this warranty. Owner is responsible for all costs, including, but not limited to, repairs made to items other than the engine in which the parts are installed, "downtime" expenses and all business costs and losses resulting from a warrantable failure. OWNER MUST GET AUTHORIZATION FROM INTERSTATE-McBEE'S WARRANTY ADMINISTRATOR (ALONG WITH A RETURN MATERIAL AUTHORIZATION FORM) PRIOR TO FILING A WARRANTY CLAIM WITHIN SAID WARRANTY PERIOD.

WARRANTY LIMITATIONS

Interstate-McBee is not responsible for failure resulting from owner or operator abuse or neglect, such as, but not limited to: operation without adequate coolant, fuel or lubricants; overfueling*; overspeeding; lack of maintenance of lubricating, coolant or air intake systems; improper storage, starting, warm-up, run-in or shut down practices. Interstate-McBee is not responsible for failures resulting from improper repair or installation, for parts that have been altered or for parts not approved by Interstate-McBee. This warranty does not apply to parts furnished on a no charge basis. Interstate-McBee does not warrant parts supplied by Interstate-McBee which bear the name and or trademark of another company. These parts are warranted by their manufacturers and not by Interstate-McBee. In no event shall this warranty extend beyond eighteen (18) months from the date of sale. THERE ARE NO WARRANTIES EXPRESSED, IMPLIED OR STATUTORY, FOR THE PARTS NAMED HEREIN BEFORE, MADE BY INTERSTATE-McBEE OTHER THAN SET FORTH HEREIN. We neither assume nor authorize any other persons to assume for us any other liability in connection with our products. INTERSTATE-McBEE SHALL NOT BE RESPONSIBLE FOR ANY OTHER CONSEQUENTIAL DAMAGES OR CONTINGENT LIABILITIES. Further, in no event shall Intestate-McBee bear any responsibility for any damages, which exceed the then available aggregate coverage provided under the terms and conditions of its product liability policy.

*covered on fuel injection products

This warranty shall be interpreted, governed and enforced in accordance with the laws of the State of Ohio, U.S.A. (For products not covered herein, see Interstate-McBee's Extended Warranty). Any actions or proceedings relating to this warranty must be filed or commenced within three (3) months of the alleged breach. If any of these warranty provisions or portions thereof is prohibited by law or by any court of competent jurisdiction, in any locality, its invalidity or unenforceability shall not affect the validity or the enforceability of any other warranty provisions or portions thereof.

This warranty applies to parts sold by Interstate on or after August, 2007.

NOTE

Freight: Domestic orders of \$1500.00 or more (not including core charges, where applicable) will justify prepaid freight for a carrier of our choice. This refers only to "normal" domestic shipments.

Return Goods: An "RGA" form must be filled out and approved by our sales office before return of goods, which must be freight prepaid. When approved, a 15% restocking fee will be deducted from the purchase price. Items which were "special ordered" or have been obsoleted are not acceptable.

Core Returns: Cores must be returned freight prepaid, with appropriate documents, to the factory in Cleveland, Ohio.

Additional terms and conditions apply.

Go to www.interstate-mcbee.com for complete terms and conditions.

INTERSTATE-McBEE, LLC

4901 Lakeside Avenue
Cleveland, Ohio 44114-3996 U.S.A.

Telephone: 800-321-4234

Telephone: 216-881-0015

Fax: 216-706-5010

Website: www.interstate-mcbee.com

e-mail: sales@interstate-mcbee.com