



INTERSTATE-McBEE

"Quality Without Compromise"



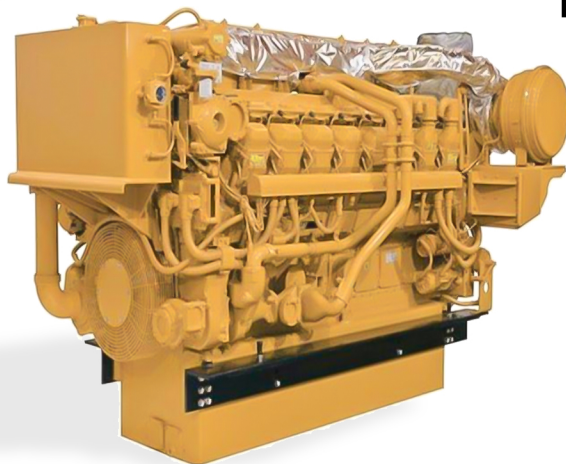
CYLINDER KITS AND COMPONENTS FOR CATERPILLAR® G3500 ENGINE APPLICATIONS

The Caterpillar® G3500 engine has proven over millions of operating hours in the field to be a high-efficiency, low emissions engine for gas-lift, gas gathering, and wellhead gas compression applications. Interstate-McBee is proud to offer a full line of the highest quality replacement parts at reasonable prices, and delivered in a timely manner.

For a full list of offerings, visit Interstate-McBee.com

Features and Benefits of the Interstate-McBee Components:

- ◆ Induction hardened cylinder liners for reducing bore wear
- ◆ Roll burnished flange radius for increased flange strength
- ◆ Select liner o-ring seal materials to prevent coolant leakage and oil contamination
- ◆ Automatic bore honing to control finish for fast break-in and oil control
- ◆ Computer controlled piston machining to maintain proper clearances
- ◆ Diamond turned pistons for machining accuracy and proper surface finish
- ◆ Piston pins are hardened and tempered for greater strength and wear resistance
- ◆ Piston rings made from alloy cast iron or steel where required and coated on ring faces with wear resistant materials for extended wear characteristics
- ◆ Oil control rings designed with precise tangential tension for proper oil control
- ◆ Tri-metal construction rod and main bearings for durability
- ◆ McBee Style Caterpillar Custom Gasket Sets
- ◆ OEM gasket materials used throughout for leak free durability
- ◆ High temperature polymer water seals with stainless steel carrier for durability and positive sealing



Additional Items Available from Interstate-McBee for the G3500:

Vibration Dampers
Connecting Rod Bearings
Main Bearing
Thrust Bearings
Camshaft Bushings
Piston Pin Bushings
Valve Train Components
Spacer Plates
Rocker Arm Buttons
Rocker Arm Bushings
Rocker Cover Gaskets
Lifter and Components
Thermostats
Component Gaskets and Seals
McBee Custom Gasket Sets

Our Standard Cylinder Kit Components Include:

- Cylinder Liner
- Liner Seal Kit
- Piston
- Ring Set
- Piston Pin
- Pin Retainer



Caterpillar is a registered trademark of Caterpillar, Inc.



**SERVING THE DIESEL AND
NATURAL GAS INDUSTRY
FOR OVER 70 YEARS**

WORLD HEADQUARTERS

5300 Lakeside Ave.
Cleveland, OH 44114
PH: 216-881-0015
Fax: 216-881-0805

FLORIDA

9955 NW 58th St.
Doral, FL 33178
PH: 305-863-6650
Fax: 305-863-6272

CALIFORNIA

13137 Arctic Circle
Santa Fe Springs, CA 90670
PH: 562-356-5414
Fax: 562-926-2452

TEXAS

1755 Transcentral Ct. Suite 200
Houston, TX 77032
PH: 281-645-7168
Fax: 281-443-0202

WWW.INTERSTATE-McBEE.COM

